

**TECHNICAL MANUAL**

**ORGANIZATIONAL, DIRECT SUPPORT, AND  
GENERAL SUPPORT MAINTENANCE REPAIR  
PARTS AND SPECIAL TOOLS LISTS  
(INCLUDING DEPOT MAINTENANCE REPAIR  
PARTS AND SPECIAL TOOLS)**

**FOR**

**CHARGER, RADIAC DETECTOR**

**PP-4370/PD**

**(NSN 6665-01-042-0382)**

---

**HEADQUARTERS, DEPARTMENT OF THE ARMY**

**5 JULY 1983**

**ORGANIZATIONAL, DIRECT SUPPORT, AND GENERAL SUPPORT  
 MAINTENANCE REPAIR PARTS AND SPECIAL TOOLS LISTS  
 (INCLUDING DEPOT MAINTENANCE REPAIR PARTS  
 AND SPECIAL TOOLS)**

**FOR**

**CHARGER, RADIAC DETECTOR PP-4370/PD**

**(NSN 6665-01-042-0382)**

Current as of 28 March 1983

**REPORTING ERRORS AND RECOMMENDING IMPROVEMENTS**

You can help improve this manual. If you find any mistakes or if you know of a way to improve the procedures, please let us know. Mail your letter, DA Form 2028 (Recommended Changes to Publications and Blank Forms), or DA Form 20282 located in the back of this manual direct to Commander, US Army Communications-Electronics Command and Fort Monmouth, ATTN: DR-SEL-ME-MP, Fort Monmouth, NJ 07703.

In either case, a reply will be furnished direct to you.

**Table of Contents**

		<b>Page</b>	<b>Illus Figure</b>
SECTION	I. Introduction .....	1	
	II. Repair Parts List.....	5	
GROUP	00 Charger, Radiac Detector PP-4370/PD .....	5	1
	01 Front Panel Assembly .....	9	2
	0101 Component Assembly, Printed Wiring Board (No parts authorized)		
	0102 Component Assembly, Power Supply.....	13	3
	0103 Socket Assembly, Charging.....	17	4
	0104 Socket Assembly, Pumping (No parts authorized)		
	0105 Magnet Assembly (No parts authorized)		
	02 Case Assembly, Charger. ....	21	5
	03 Case Assembly 24 VDC (No parts authorized)		
	04 Adapter Assembly (No parts authorized)		
SECTION	III. Special Tools List (Not applicable)		
	IV. National Stock Number and Part Number Index.....	22	

SECTION I

INTRODUCTION

**1. Scope**

This manual lists spares and repair parts; special tools; special test, measurement, and diagnostic equipment (TMDE), and other special support equipment required for performance of organizational, direct support, and general support maintenance of the PP-4370/PD. It authorizes the requisitioning and issue of spares and repair parts as indicated by the source and maintenance codes.

**2. General**

This Repair Parts and Special Tools List is divided into the following sections:

*a. Section II. Repair Parts List.* A list of spares and repair parts authorized for use in the performance of maintenance. The list also includes parts which must be removed for replacement of the authorized parts. Parts lists are composed of functional groups in numeric sequence, with the parts in each group listed in figure and item number sequence.

*b. Section III. Special Tools List.* Not applicable.

*c. Section IV. National Stock Number and Part Number Index.* A list, in National Item identification number (NIN) sequence, of all National stock numbers (NSN) appearing in the listings, followed by a list, in alphameric sequence, of all part numbers appearing in the listings. National stock numbers and part numbers are cross-referenced to each illustration figure and item number appearance.

**3. Explanation of Columns**

*a. Illustration.* This column is divided as follows:

(1) *Figure number.* Indicates the figure number of the illustration on which the item is shown.

(2) *Item number.* The number used to identify item called out in the illustration.

*b. Source, Maintenance, and Recoverability (SMR) Codes.*

(1) *Source code.* Source codes indicate the manner of acquiring support items for maintenance, repair, or overhaul of end items. Source codes are entered in the first and second positions of the Uniform SMR Code format as follows:

<i>Code</i>	<i>Definition</i>
PA -	Item procured and stocked for anticipated or known usage.
XB -	Item is not procured or stocked. If not available through salvage, requisition.

**NOTE**

**Cannibalization or salvage may be used as a source of supply for any items source coded above except those coded XA and aircraft support items as restricted by AR 700-42.**

(2) *Maintenance code.* Maintenance codes are assigned to indicate the levels of maintenance authorized to USE and REPAIR support items. The maintenance codes are entered in the third and fourth positions of the Uniform SMR Code format as follows:

(a) The maintenance code entered in the third position will indicate the lowest maintenance level authorized to remove, replace, and use the support item. The maintenance code entered in the third position will indicate one of the following levels of maintenance:

<i>Code</i>	<i>Application/Explanation</i>
O -	Support item is removed, replaced, used at the organizational level.
H -	Support item is removed, replaced, used at the general support level.

(b) The maintenance code entered in the fourth position indicates whether the item is to be repaired and identifies the lowest maintenance level with the capability to perform complete repair (i.e., all authorized maintenance functions). This position will contain one of the following maintenance codes:

<i>Code</i>	<i>Application/Explanation</i>
H -	The lowest maintenance level capable of complete repair of the support item is the general support level.
Z -	Nonreparable. No repair is authorized.

(3) *Recoverability code.* Recoverability codes are assigned to support items to indicate the disposition action on unserviceable items. The recoverability code is entered in the fifth position of the Uniform SMR Code format as follows:

<i>Recoverability codes</i>	<i>Definition</i>
Z -	Nonreparable item. When unserviceable, condemn and dispose at the level indicated in position 3.
H -	Reparable item. When uneconomically reparable, condemn and dispose at the general support level.

*c. National Stock Number.* Indicates the National stock number assigned to the item and will be used for requisitioning purposes.

*d. Federal Supply Code for Manufacturer (FSCM).* The FSCM is a 5-digit numeric code listed in SB 708-41/42 which is used to identify the manufacturer, distributor, or Government agency, etc.

*e. Part Number.* Indicates the primary number used by the manufacturer (individual, company, firm, corporation, or Government activity), which controls the design and characteristics of the item by means of its engineering drawings, specifications, standards, and inspection requirements to identify an item or range of items.

#### NOTE

**When a stock numbered item is requisitioned, the repair parts received may have a different part number than the part being replaced.**

*f. Description.* Indicates the Federal item name and, if required, a minimum description to identify the item.

*g. Unit of Measure (U/M).* Indicates the standard of the basic quantity of the listed item as used in performing the actual maintenance function. This measure is expressed by a two-character alphabetical abbreviation (e.g., ea, in, pr, etc). When the unit of measure differs from the unit of issue, the lowest unit of issue that will satisfy the required units of measure will be requisitioned.

*h. Quantity Incorporated in Unit.* Indicates the quantity of the item used in the breakout shown on the illustration figure, which is prepared for a functional group, subfunctional group, or an assembly.

#### 4. Special Information

*a.* The following publications pertain to the PP-4370/PD and its components:  
TM 11-6665-234-12, Charger, Radiac Detector, PP-4370/PD (To be published).

*b.* National stock numbers (NSN's) that are missing from P source coded items have been applied for and will be added to this TM by future change/revision when they are entered in the Army Master Data File (AMDF). Until the NSN's are established and published, submit exception requisitions to: Commander, US Army Communications-Electronics Command and Fort Monmouth, ATTN: DR-SEL-MM, Fort Monmouth, NJ 07703 for the part required to support your equipment.

#### 5. How to Locate Repair Parts

*a.* When National stock number or part number is unknown.

(1) *First.* Using the table of contents, determine the functional group within which the item belongs. This is necessary since illustrations are prepared for functional groups and listings are divided into the same groups.

(2) *Second.* Find the illustration covering the functional group to which the item belongs.

(3) *Third.* Identify the item on the illustration and note the illustration figure and item number of the item.

(4) *Fourth.* Using the Repair Parts Listing, find the figure and item number noted on the illustration.

*b.* When National stock number or part number is known.

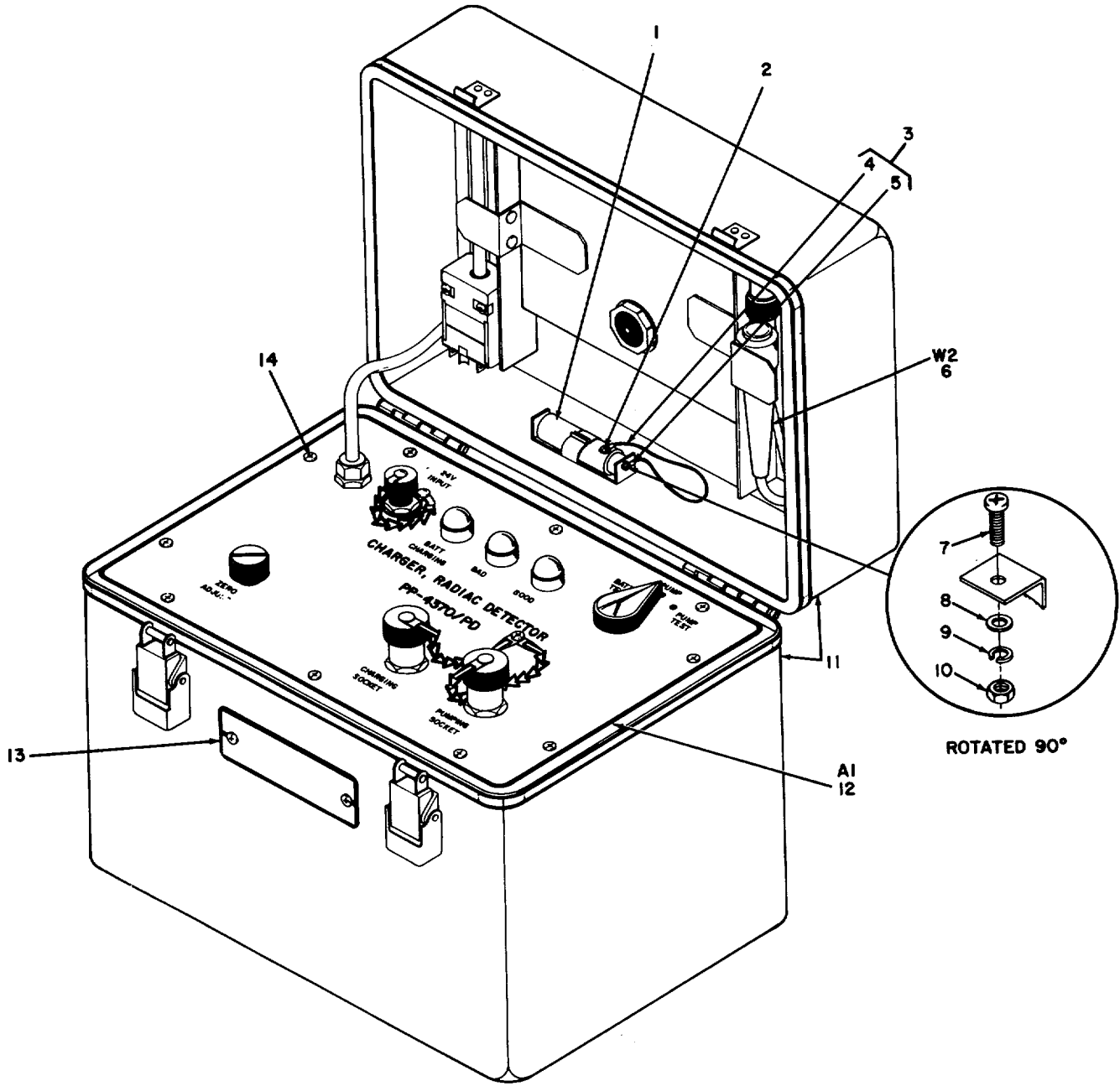
(1) *First.* Using the Index of National Stock Numbers and Part Numbers, find the pertinent National stock number or part number. This index is in NIN sequence followed by a list of part numbers in alphameric sequence, cross-referenced to the illustration figure number and item number.

(2) *Second.* After finding the figure and item number, locate the figure and item number in the repair parts list.

#### 6. Abbreviations

Not applicable.

(Next printed page is 4)



ASSEMBLY

EL7U0001

Figure 1. Charger, Radiac Detector PP-4370/PD (Sheet 1 of 3).

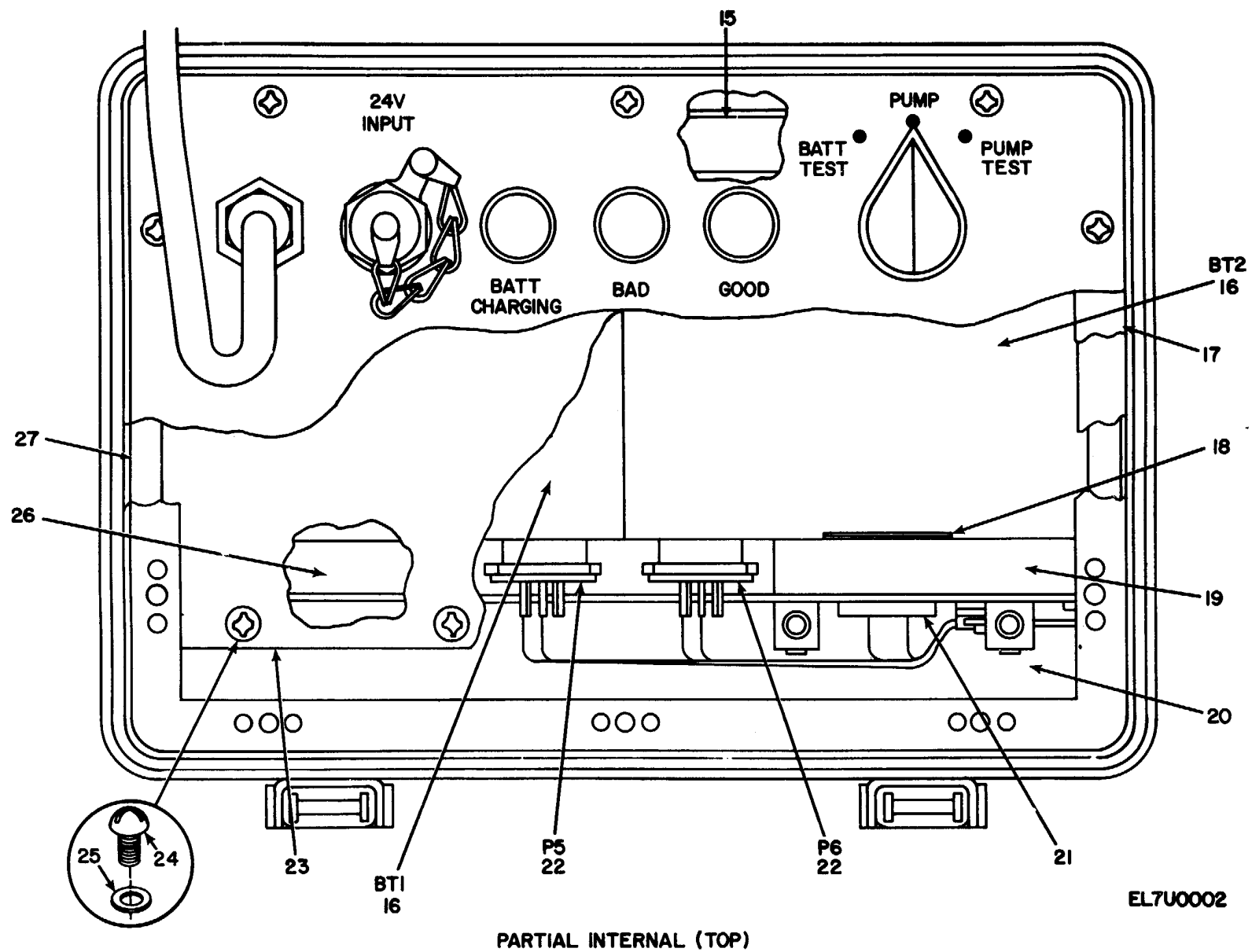
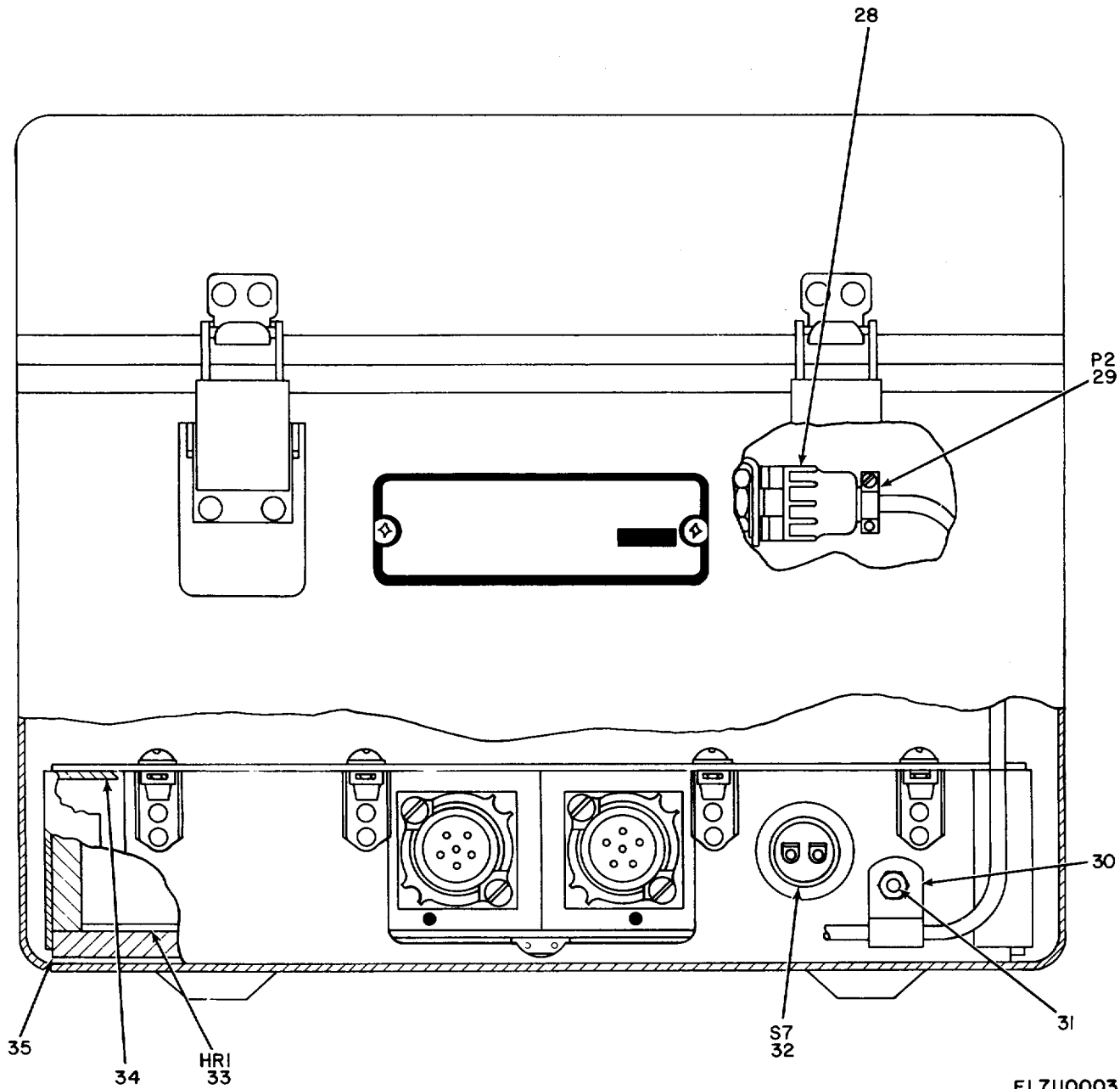


Figure 1. Charger, Radiac Detector PP-4370/PD (Sheet 2 of 3).



PARTIAL INTERNAL (FRONT)

Figure 1. Charger, Radiac Detector PP-4370/PD (Sheet 3 of 3).

SECTION II

TM 11-6665-234-24P

(1) ILLUSTRATION		(2)	(3)	(4)	(5)	(6)	(7)	(8)
(a) FIG NO,	(b) ITEM NO,	SMR CODE	NATIONAL STOCK NUMBER	FSCM	PART NUMBER	DESCRIPTION  USABLE ON CODE	U/M	QTY INC IN UNIT
						GROUP 00 CHARGER, RADIAC DETECTOR PP-4370/PD		
1	1	XBHZZ		80063	SM-C-688770	ADAPTER ASSEMBLY .....	EA	1
1	2	PAHZZ	5305-00-054-5644	96906	MS51957-11	SCREW, MACHINE .....	EA	1
1	3	XBHZZ		80063	SM-C-688910	LINK ASSEMBLY, CONN .....	EA	1
1	4	PAHZZ		81349	TYPE P, CLASS 2	CORD, NYLON, 7 INCH .....	EA	1
1	5	PAHZZ	5940-00-113-3142	59730	B14-4	TERMINAL, LUG .....	EA	2
1	6	PAOZZ		80063	SM-D-688767	CABLE ASSY, POWER .....	EA	1
1	7	PAHZZ	5305-00-054-5648	96906	MS51957-14	SCREW, MACHINE .....	EA	2
1	8	PAHZZ	5310-00-595-6211	96906	MS15795-803	WASHER, FLAT .....	EA	3
1	9	PAHZZ	5310-00-933-8118	96906	M535338-135	WASHER, LOCK, SPLIT .....	EA	3
1	10	PAHZZ	5310-00-934-9748	96906	MS35649-244	NUT, PLAIN, HEXAGON .....	EA	1
1	11	PAHHH		80063	SM-D-688802	CASE, ASSEMBLY .....	EA	1
1	12	XBHHH		80063	SM-D-688804	PANEL ASSY, FRONT .....	EA	1
1	13	XBHZZ		80063	SM-D-688900	PLATE, IDENT .....	EA	1
11	4	XBHZZ		24169	AB263147	SCREW, SELF-SEALING .....	EA	10
1	15	XBHZZ		80063	SM-D-688768-2	INSULATION, BATTERY .....	EA	1
1	16	PAHZZ		80058	BB-506( )/U	BATTERY, STORAGE .....	EA	2
1	17	XBHZZ		80063	SM-C-688781	GASKET .....	EA	1
1	18	XBHZZ		80063	SM-C-688908	WASHER, SPRING .....	EA	1
1	19	XBHZZ		80063	SM-C-688768-5	INSULATION, BATTERY .....	EA	1
1	20	XBHZZ		80063	SM-B-688907	INSULATION, BATTERY .....	EA	1
1	21	XBHZZ		80063	SM-B-688906	INSULATOR .....	EA	1
1	22	XBHZZ		71468	CA110821-6	CONNECTOR, RECEPTACL .....	EA	2
1	23	XBHZZ		80063	SM-C-688798	CLAMP, BATTERY .....	EA	2
1	24	PAHZZ	5305-00-054-6669	96906	MS51957-44	SCREW, MACHINE .....	EA	8
1	25	PAHZZ	5310-00-880-5978	96906	MS15795-807	WASHER, FLAT .....	EA	8
1	26	XBHZZ		80063	SM-C-688768-4	INSULATION, BATTERY .....	EA	1
1	27	XBHZZ		80063	SM-C-688768-3	INSULATION, BATTERY .....	EA	2
1	28	PAHZZ	5935-00-755-2414	96906	MS24018-7	SHELL, ELECTRICAL CO .....	EA	1
1	29	PAHZZ	5935-00-754-8795	96906	MS24056-2	CONNECTOR, PLUG .....	EA	1
1	30	PAHZZ	5340-00-753-3456	96906	MS25281-R2	CLAMP, LOOP .....	EA	1
1	31	PAHZZ	5305-00-768-0336	96906	MS51959-17	SCREW, MACHINE .....	EA	1
1	32	PAHZZ		14604	3500-1	THERMOSTAT .....	EA	1
1	33	XBHZZ		07203	SF9815	BLANKE, THERMAL .....	EA	1
1	34	XBHZZ		80063	SM-C-688913	INSULATION, BATTERY .....	EA	1
1	35	XBHZZ		80063	SM-C-688768-1	INSULATION, BATTERY .....	EA	1



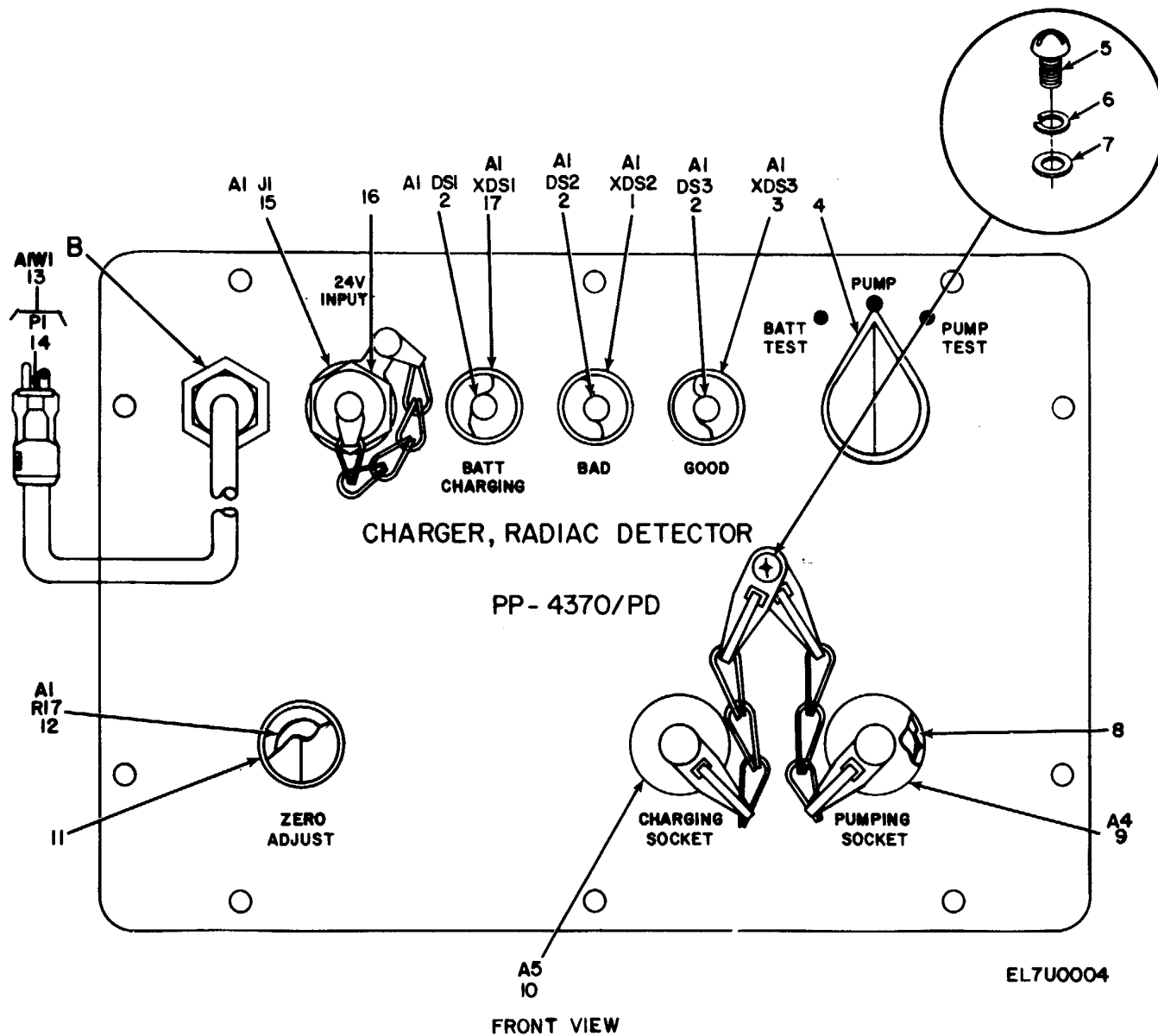
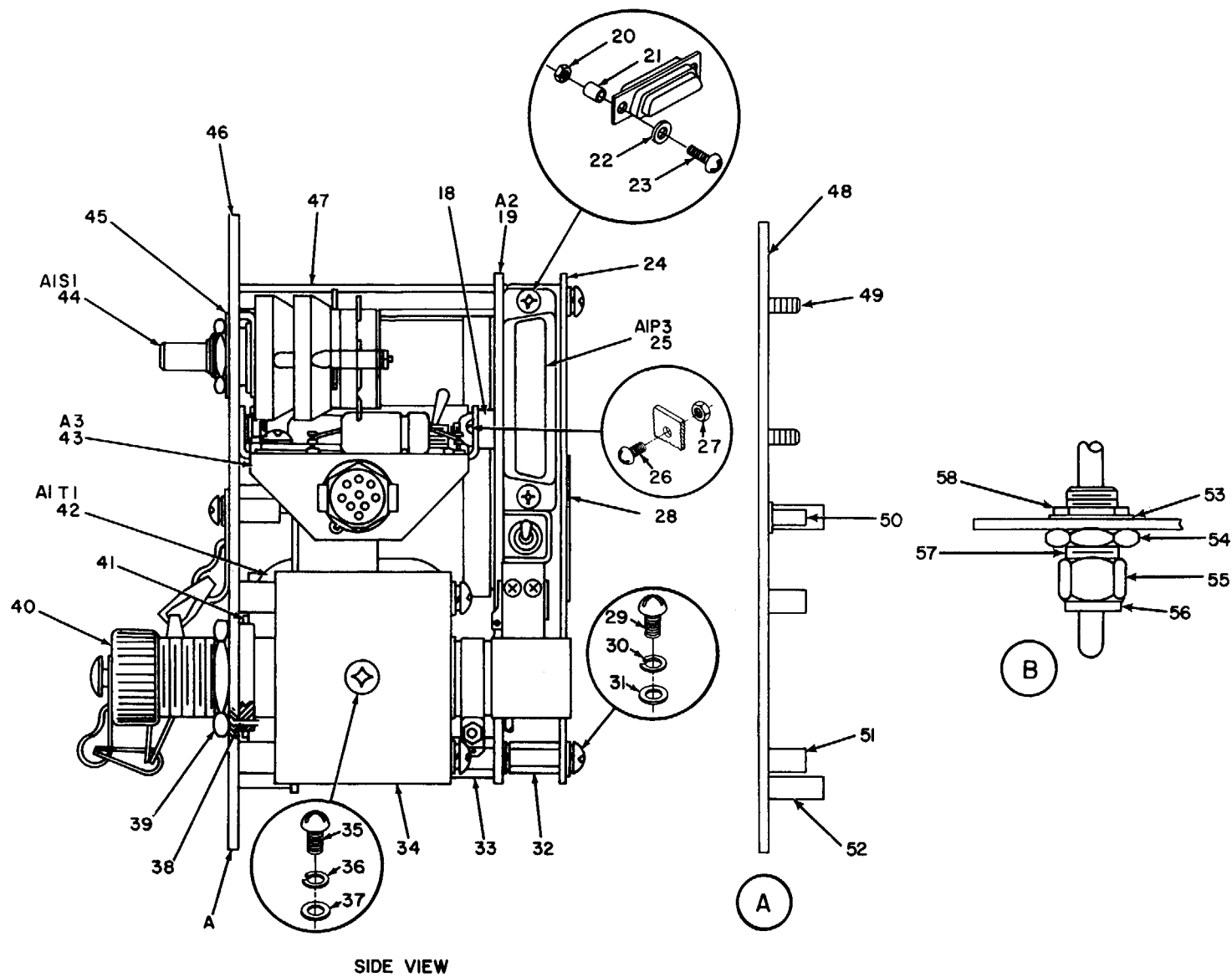


Figure 2. Front Panel Assembly (Sheet 1 of 2).



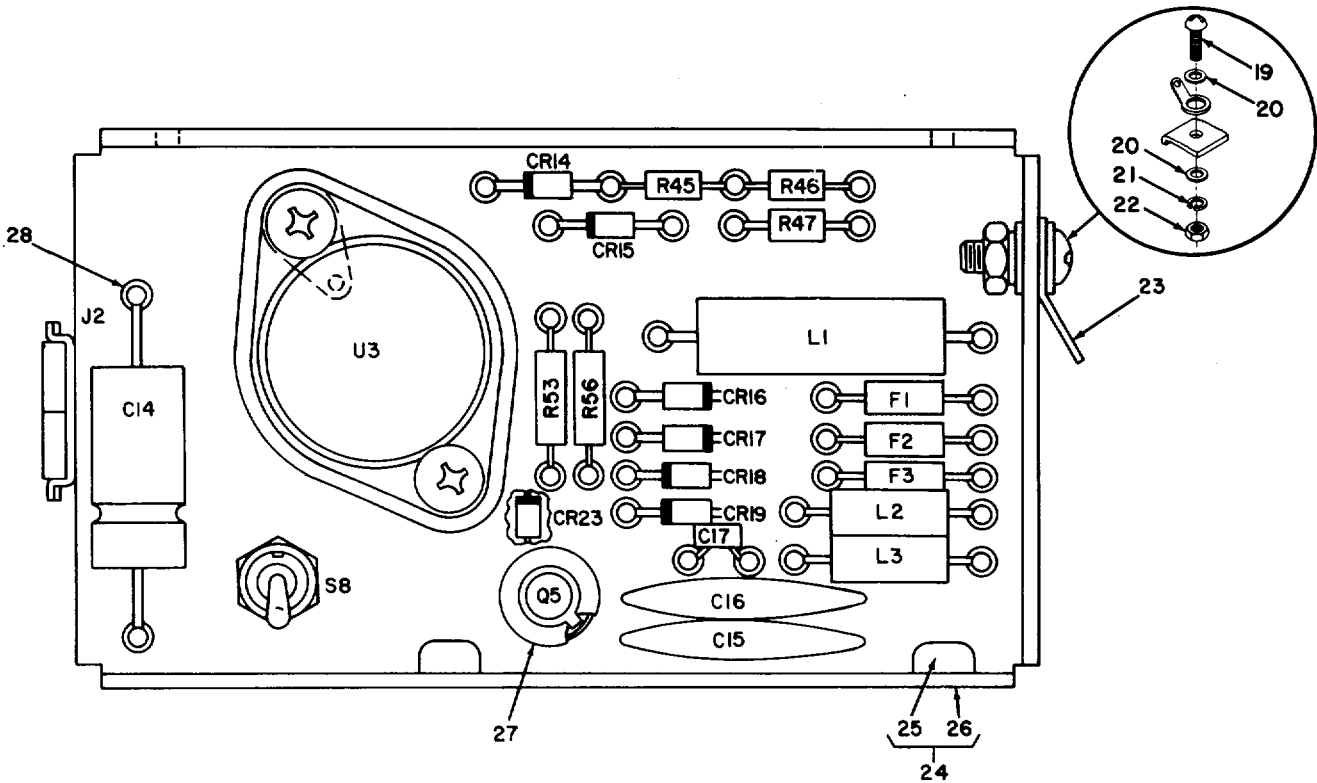
SIDE VIEW

EL7U0005

Figure 2. Front Panel Assembly (Sheet 2 of 2).

(1) ILLUSTRATION		(2)	(3)	(4)	(5)	(6)	(7)	(8)
(a) FIG NO,	(b) ITEM NO,	SMR CODE	NATIONAL STOCK NUMBER	FSCM	PART NUMBER	DESCRIPTION  USABLE ON CODE	U/M	QTY INC IN UNIT
GROUP 01 FRONT PANEL ASSEMBLY								
2	1	PAHZZ			177-8430-0931-50	LIGHT, INDICATOR.....	EA	1
				72619	3			
2	2	PAOZZ	6240-00-965-1381	76854	184	LAMP, INCANDESCENT .....	EA	3
2	3	PAHZZ			177-8430-0932-50	LIGHT, INDICATOR.....	EA	1
				72619	3			
2	4	PAHZZ	5355-00-582-3804	96906	MS91528-2P28	KNOB .....	EA	1
2	5	PAHZZ	5805-00-543-0012	80058	TA-312/PT	SCREW, MACHINE .....	EA	1
2	6	PAHZZ	5310-00-933-8118	96906	MS35338-135	WASHER, LOCK, SPLIT .....	EA	5
2	7	PAHZZ	5310-00-595-6211	96906	MS15795-803	WASHER, FLAT .....	EA	1
2	8	XBHZZ		80063	SM-C-688809	WASHER, SPRING .....	EA	2
2	9	PAHZZ		80063	SM-D-688807	SOCKET ASSY, PUMPING .....	EA	1
2	10	PAHHH		80063	SM-D-688808	SOCKET ASSY, CHG.....	EA	1
2	11	PAHZZ	5355-00-543-0789	96906	MS91528-1N28	KNOB .....	EA	1
2	12	PAHZZ		01121	97662	RESISTOR, VARIABLE .....	EA	1
2	13	XBHZZ		80063	SM-C-688849	CORD, POWER SUPPLY .....	EA	1
2	14	PAHZZ	5935-01-064-9144	74545	5965-VY	PLUG,ELECTRICAL .....	EA	1
2	15	PAHZZ		77820	PT07E-8-3P	CONNECTOR, RCPT .....	EA	1
2	16	PAHZZ	5935-00-990-5582	96906	MS3181-8N	COVER, ELECTRICAL CO.....	EA	1
2	17	PAHZZ			177-8430-0933-50	LIGHT, INDICATOR.....	EA	1
				72619	3			
2	18	XBHZZ		80063	SM-B-688901	SPACER, NYLON.....	EA	2
2	19	PAHZZ		80063	SM-D-688810	COMPONENT ASSEMBLY .....	EA	1
2	20	PAHZZ	5310-00-810-7785	80205	NAS671-4	NUT, PLAIN, HEXAGON .....	EA	2
2	21	XBHZZ		80063	SM-B-688799	STANDOFF .....	EA	2
2	22	PAHZZ	5310-00-616-3648	80205	NAS620-4L	WASHER, FLAT .....	EA	2
2	23	PAHZZ	5305-00-054-5653	96906	MS51957-19	SCREW, MACHINE .....	EA	2
2	24	XBHZZ		80063	SM-C-688797	GUARD, PC BOARD .....	EA	1
2	25	PAHZZ	5935-00-410-9250	81349	M24308/2-3	CONNECTOR, RECEPTACL.....	EA	1
2	26	PAHZZ	5305-00-054-6654	96906	MS51957-30	SCREW, MACHINE .....	EA	2
2	27	PAHZZ	5310-00-934-9761	96906	MS35649-264	NUT PLAIN, HEXAGON .....	EA	2
2	28	XBHZZ		80063	SM-B-688903	PLATE, WARNING .....	EA	1
2	29	PAHZZ	5305-00-763-6963	96906	MS51959-28	SCREW, MACHINE .....	EA	8
2	30	PAHZZ	5310-00-929-6395	96906	MS35337-79	WASHER, LOCK .....	EA	14
2	31	PAHZZ	5310-00-722-5998	96906	MS15795-805	WASHER, FLAT .....	EA	16
2	32	X8HZZ		80063	SM-B-688795	STANDOFF .....	EA	4
2	33	XBHZZ		80063	SM-B-688796	STANDOFF .....	EA	1
2	34	XBHZZ		80063	SM-D-688811	MAGNET ASSY.....	EA	1
2	35	PAHZZ	5305-00-054-6680	96906	MS51957-53	SCREW, MACHINE .....	EA	3
2	36	PAHZZ	5310-00-933-8119	96906	MS35337-80	WASHER, LOCK .....	EA	3
2	37	PAHZZ	5310-00-880-5978	96906	MS15795-807	WASHER, FLAT .....	EA	3

(1) ILLUSTRATION		(2)	(3)	(4)	(5)	(6)	(7)	(8)
(a) FIG NO,	(b) ITEM NO,	SMR CODE	NATIONAL STOCK NUMBER	FSCM	PART NUMBER	DESCRIPTION  USABLE ON CODE	U/M	QTY INC IN UNIT
2	38	PAHZZ	5315-00-847-3735	96906	MS16562-190	PIN, SPRING .....	EA	1
2	39	PAHZZ	5975-00-296-0534	88044	AN3066-6	LOCKNUT, ELECTRICAL.....	EA	2
2	40	PAHZZ	5935-00-238-6419	96906	MS25043-12D	COVER, ELECTRICAL CU .....	EA	2
2	41	PAHZZ	5330-00-248-3848	96906	MS29513-018	PACKING, PREFORMED .....	EA	2
2	42	XBHZZ		80063	SM-D-68829	TRANSFORMER, POWER.....	EA	1
2	43	PAHHH		80063	SM-D-688774	POWER SUPPLY ASSY .....	EA	1
2	44	PAHZZ		80173	44-MY-231524	SWITCH, ROTARY .....	EA	1
2	45	PAHZZ		88044	AN960C6166	WASHER, FLAT .....	EA	1
2	46	XBHZZ		80063	SM-D-688806	PANEL, FRONT.....	EA	1
2	47	XBHZZ		80063	SM-B-688850	STANDOFF .....	EA	3
2	48	XBHZZ		80063	SM-D-688806-1	PANEL.....	EA	1
2	49	XBHZZ		46384	FHS-6-32-6	STUD, SELF-CLINCHING .....	EA	5
2	50	PAHZZ	5310-00-753-5315	46384	BS-440-2	FASTENER, BLIND .....	EA	1
2	51	XBHZZ		46384	BSOS-832-14	STANDOFF .....	EA	4
2	52	XBHZZ		46384	BS-05-632-20	STANDOFF .....	EA	4
2	53	PAHZZ	5310-00-905-5454	88044	AN936A716S	WASHER, LOCK .....	EA	1
2	54	XBHZZ		80063	SM-C-688833	BUSHING .....	EA	1
2	55	XBHZZ		80063	SM-C-688834	NUT, HEXAGON.....	EA	1
2	56	PAHZZ	5365-00-215-7421	30327	60-FL-1/4	BUSHING, RUBBER.....	EA	1
2	57	PAHZZ	5330-00-248-3840	96906	MS29513-014	PACKING, PREFORMED .....	EA	1
2	58	PAHZZ	5310-00-616-2973	96906	MS25082-21	NUT, HEXAGON.....	EA	1



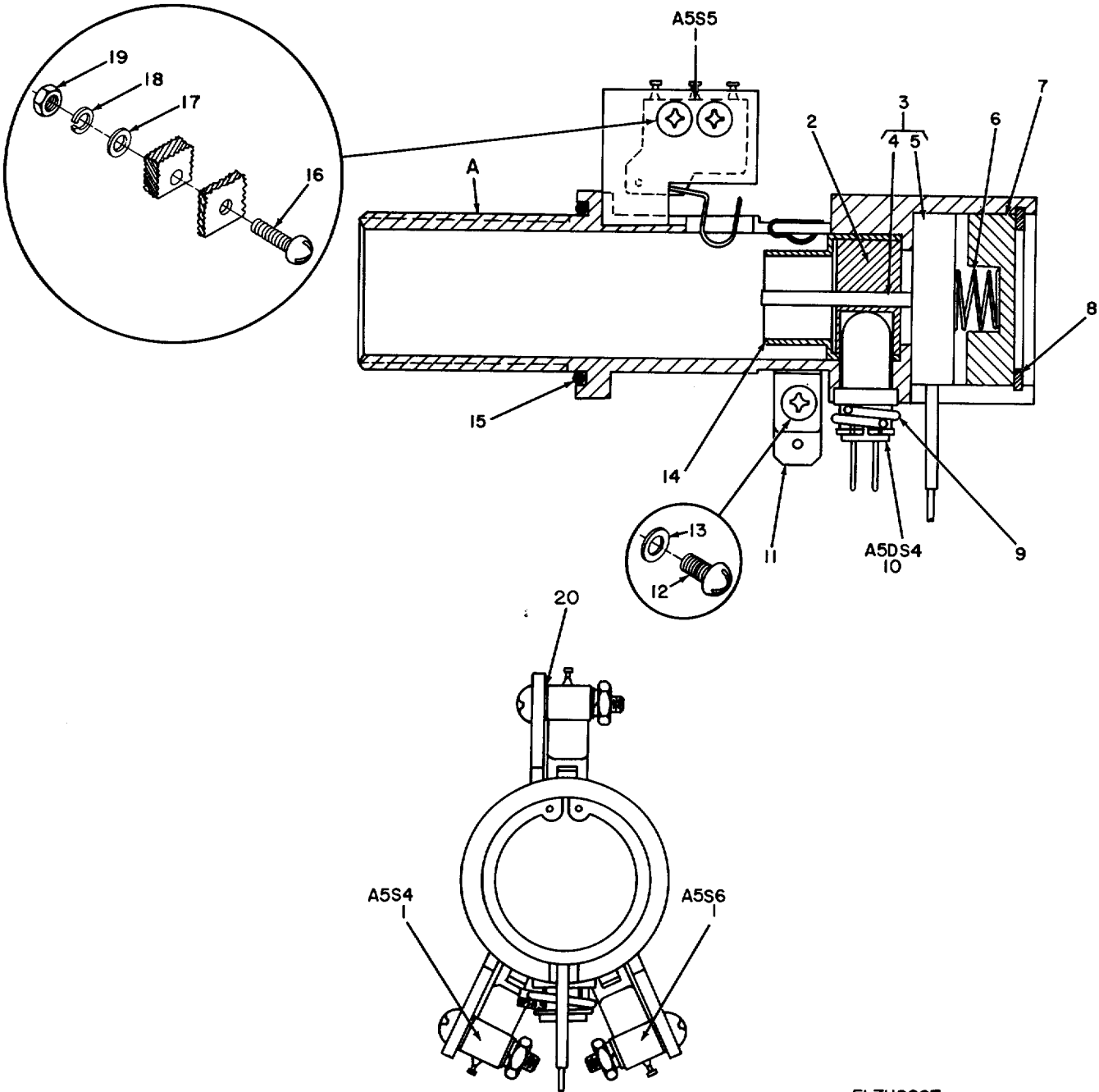
NOTE: FOR COMPLETE REFERENCE DESIGNATION, PREFIX WITH A3

REF. DES.	ITEM NO.	REF. DES.	ITEM NO.	REF. DES.	ITEM NO.	REF. DES.	ITEM NO.	REF. DES.	ITEM NO.
C14	1	CR16	4	F2	6	Q5	11	S8	17
C15	2	CR17	4	F3	7	R45	12	U3	18
C16	2	CR18	4	J2	8	R46	13		
C17	3	CR19	4	L1	9	R47	14		
CR14	4	CR23	4	L2	10	R53	15		
CR15	4	F1	5	L3	10	R56	16		

EL7U0006

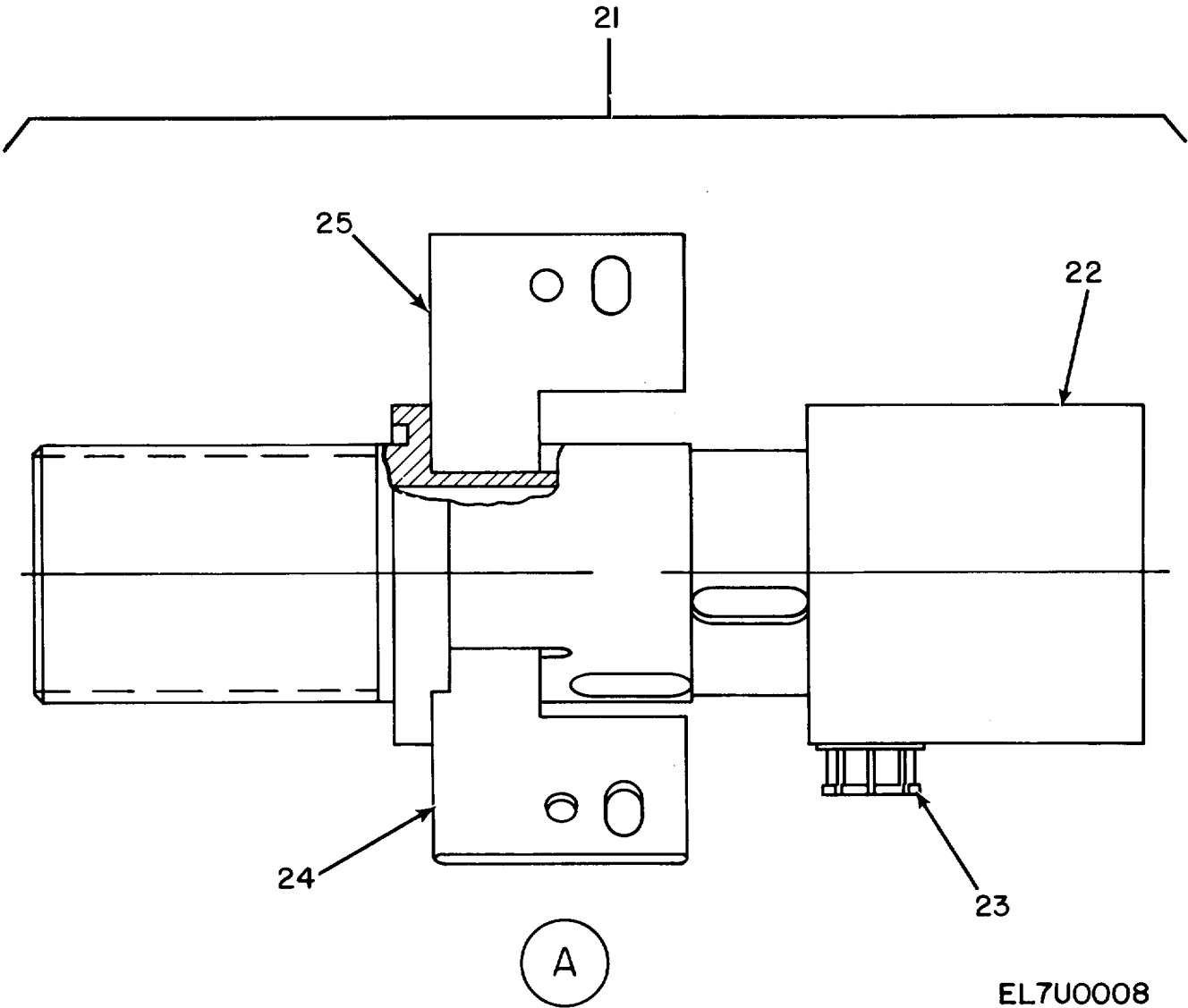
Figure 3. Component Assembly, Power Supply.

(1) ILLUSTRATION		(2)	(3)	(4)	(5)	(6)	(7)	(8)
(a) FIG NO,	(b) ITEM NO,	SMR CODE	NATIONAL STOCK NUMBER	FSCM	PART NUMBER	DESCRIPTION  USABLE ON CODE	U/M	QTY INC IN UNIT
						GROUP 0102 COMPONENT ASSEMBLY		
3	1	PAHZZ	5910-01-073-9874	81349	M39006/09-8333	CAPACITOR, TANTALUM.....	EA	1
3	2	PAHZZ		91418	WL, 01N	CAPACITOR, CERAMIC.....	EA	2
3	3	PAHZZ	5910-00-113-5286	81349	CKR06BX224K	CAPACITOR, CERAMIC.....	EA	1
3	4	PAHZZ	5961-00-924-6981	81349	JAN1N4245	SEMICONDUCTOR DEVIC .....	EA	7
3	5	PAHZZ		81349	FM04277-002	FUSE, 2 AMP .....	EA	1
3	6	PAHZZ		81349	FM04277	FUSE, 1/2 AMP .....	EA	1
3	7	PAHZZ		81349	FM04277-250	FUSE, 1/4 AMP .....	EA	1
3	8	PAHZZ	5935-00-879-6688	96906	MS24055-2	CONNECTOR, ELEC .....	EA	1
3	9	PAHZZ	5950-00-051-1129	96906	MS91189-17	COIL, RADIO FREQUENC .....	EA	1
3	10	PAHZZ	5950-00-501-1705	96906	MS75101-7	COIL, RADIO FREQUENC .....	EA	2
3	11	PAHZZ		81349	JAN2N222	TRANSISTOR.....	EA	1
3	12	PAHZZ		81349	RCR07GF241JM	RESISTOR .....	EA	1
3	13	PAHZZ		81349	RNR55E2611FM	RESISTOR .....	EA	1
3	14	PAHZZ		81349	RWRLISIROOFN	RESISTOR .....	EA	1
3	15	PAHZZ		81349	RCROTGF12OJH	RESISTOR .....	EA	1
3	16	PAHZZ		81349	RCR20GF360JN	RESISTOR .....	EA	1
3	17	PAHZZ	5930-01-057-1686	09353	7301SYZQE	SWITCH, TOGGLE.....	EA	1
3	18	XBHZZ		27014	LM117HVK	INTEGRATED CIRCUIT .....	EA	1
3	19	PAHZZ	5305-00-054-5649	96906	MS51957-15	SCREW, MACHINE.....	EA	1
3	20	PAHZZ	5310-00-595-6211	96906	MS15795-803	WASHER, FLAT .....	EA	2
3	21	PAHZZ	5310-00-933-8118	96906	MS35338-135	WASHER, LOCK .....	EA	1
3	22	PAHZZ	5310-00-934-9748	96906	MS35649-244	NUT, PLAIN, HEXAGON .....	EA	1
3	23	PAHZZ	5940-00-682-2477	96906	MS77068-1	TERMINAL, LUG .....	EA	1
3	241	XBHZZ		80063	SM-D-688882	BRACKET ASSY .....	EA	1
3	25Z	XBHZZ		46384	PLC-632	NUT, SELF-LOCKING, CL.....	EA	2
3	26	XBHZZ		80063	SM-D-688882-1	BRACKET.....	EA	1
3	27	XBHZZ		98291	027-60002	SOCKET, TRANSISTOR .....	EA	1
3	28	PAHZZ		81349	FT-04-9-B-03	TERMINAL, FEED-THRU .....	EA	40



EL7U0007

Figure 4. Socket Assembly, Charging (Sheet 1 of 2).

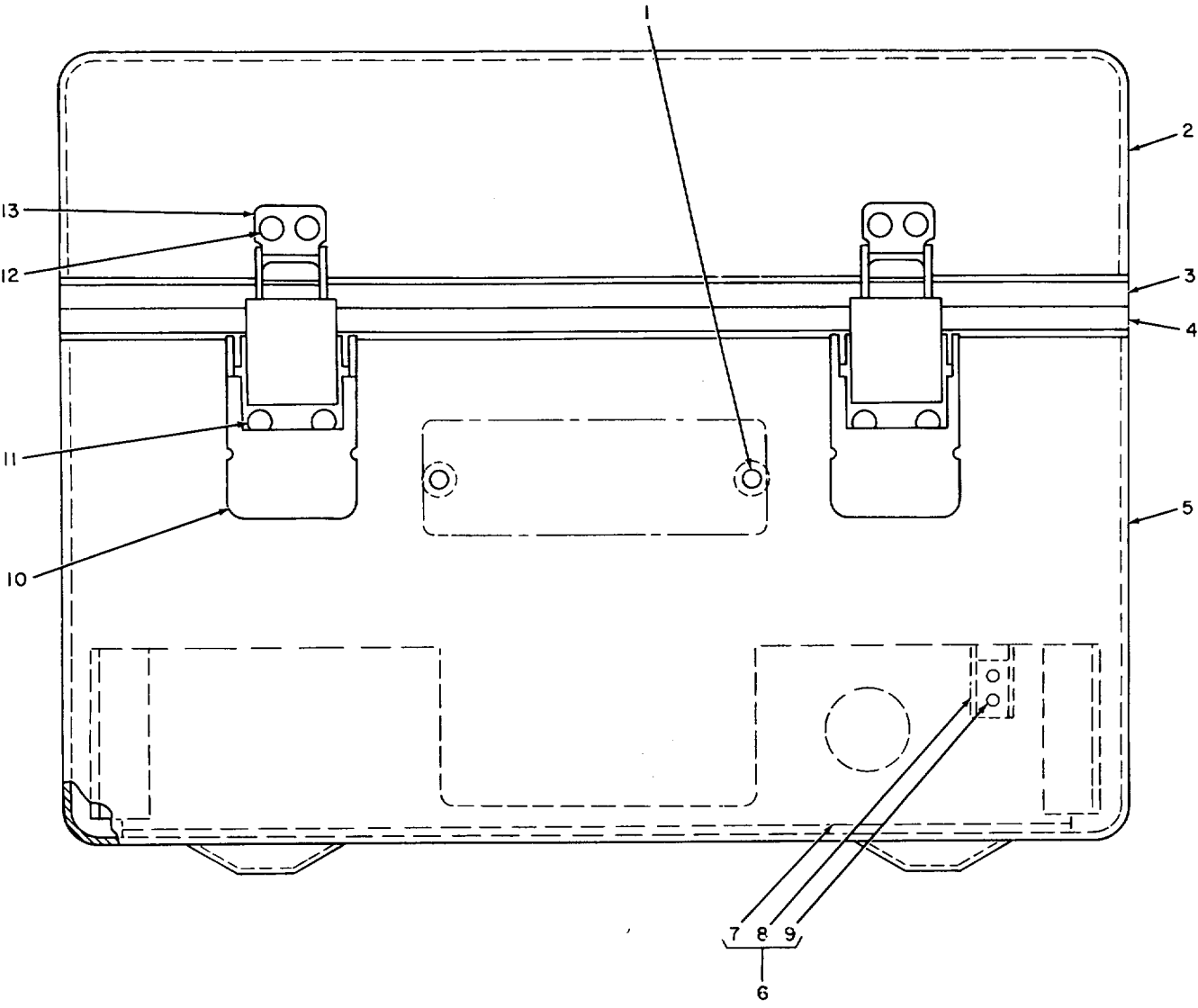


EL7U0008

Figure 4. Socket Assembly, Charging (Sheet 2 of 2).



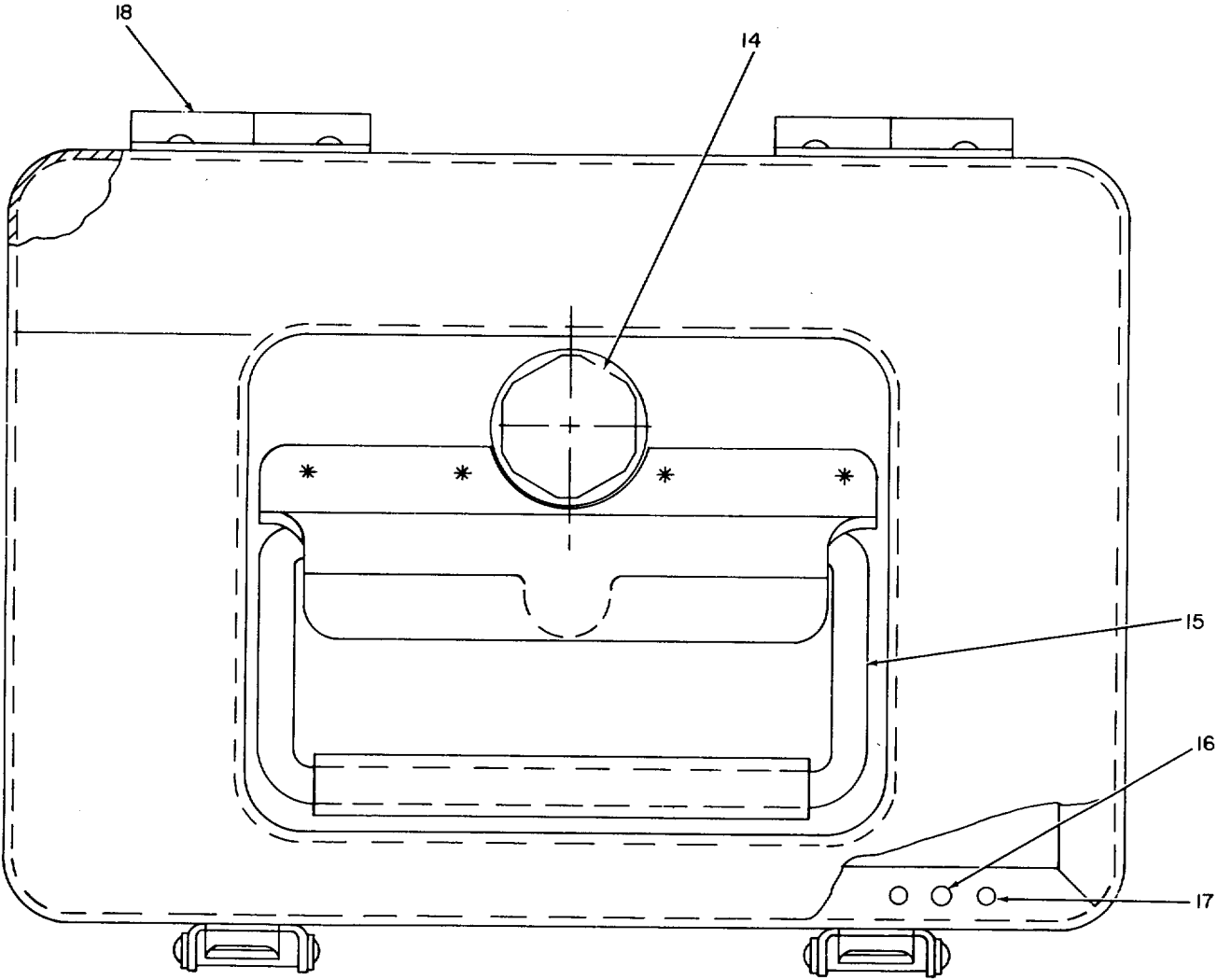
(1) ILLUSTRATION		(2)	(3)	(4)	(5)	(6)	(7)	(8)
(a) FIG NO,	(b) ITEM NO,	SMR CODE	NATIONAL STOCK NUMBER	FSCM	PART NUMBER	DESCRIPTION  USABLE ON CODE	U/M	QTY INC IN UNIT
GROUP 0103 SOCKET ASSEMBLY								
4	1	PAHZZ		91929	311SX4-T	SWITCH, SENSITIVE .....	EA	3
4	2	XBHZZ		80063	SM-B-688821	BLOCK, CHARGING SKT.....	EA	1
4	3	XBHZZ		80063	SM-C-688817	CONTACT ASSY.....	EA	1
4	4	XBHZZ		80063	SM-B-688822-1	CONTACT .....	EA	1
4	5	XBHZZ		80063	SM-B-688823	DISC, CONTACT.....	EA	1
4	6	XBHZZ		80063	SM-C-688892	SPRING, COMPRESSION .....	EA	1
4	7	XBHZZ		80063	SM-B-688818	RETAINER, SPRING.....	EA	1
4	8	PAHZZ		96906	MS16625-4081	RING, RETAINING .....	EA	1
4	9	XBHZZ		80063	SM-B-688893	CLAMP, LIGHT BUSHING.....	EA	1
4	10	PAHZZ		71744	CM7-3149	LAMP, INCANDESCENT.....	EA	1
4	11	XBHZZ		80063	SM-C-688825	CONTACT, GROUND.....	EA	1
4	11	XBHZZ		30817	97-360G	CONTACT, GROUND.....	EA	1
4	12	PAHZZ	5305-00-054-5637	96906	MS51957-3	SCREW, MACHINE .....	EA	1
4	13	XBHZZ		80063	SM-C-688881	WASHER, GROUND CONT .....	EA	2
4	14	XBHZZ		80063	SM-B-688824	CYLINDER, CHG SOCKET .....	EA	1
4	15	PAHZZ	5330-00-618-0799	96906	MS28775-018	PACKING, PREFORMED .....	EA	1
4	16	PAHZZ	5305-00-054-5640	96906	MS1957-6	SCREW, MACHINE .....	EA	6
4	17	PAHZZ	5310-00-043-4708	13499	310-0470-080	WASHER, FLAT .....	EA	8
4	18	PAHZZ	5310-00-928-2690	96906	MS35338-34	WASHER, LOCK .....	EA	7
4	19	PAHZZ	5310-00-938-2013	96906	MS35649-224	NUT, PLAIN, HEXAGON .....	EA	7
4	20	PAHZZ	5970-00-895-7579	91929	JX10001	INSULATOR, PLATE .....	EA	3
4	21	XBHZZ		80063	SM-D-688814	HOUSING ASSY .....	EA	1
4	22	XBHZZ		80063	SM-D-688894	HOUSING, CHG SOCKET.....	EA	1
4	23	XBHZZ		80063	SM-C-688895	BUSHING, LIGHT.....	EA	1
4	24	XBHZZ		80063	SM-C-688896-2	PLATE, SWITCH MOUNT .....	EA	2
4	25	XBHZZ		80063	SM-C-688896-1	PLATE, SWITCH MOUNT .....	EA	1



FRONT VIEW

EL7U0009

Figure 5. Case Assembly, Charger (Sheet 1 of 3).



TOP VIEW

EL7U0010

Figure 5. Case Assembly, Charger (Sheet 2 of 3).

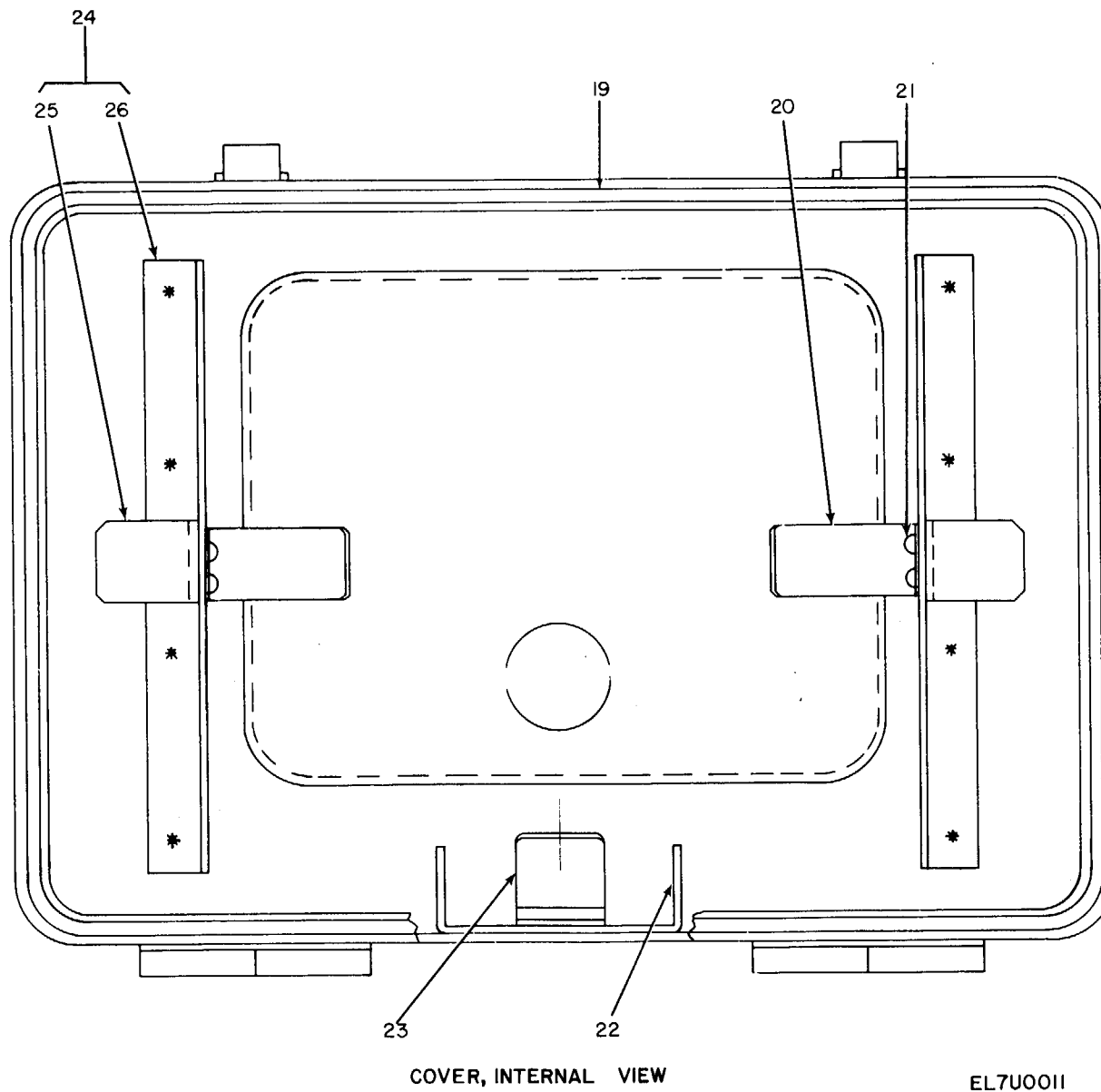


Figure 5. Case Assembly, Charger (Sheet 3 of 3).

(1) ILLUSTRATION		(2)	(3)	(4)	(5)	(6)	(7)	(8)
(a) FIG NO,	(b) ITEM NO,	SMR CODE	NATIONAL STOCK NUMBER	FSCM	PART NUMBER	DESCRIPTION  USABLE ON CODE	U/M	QTY INC IN UNIT
GROUP 02 CASE ASSEMBLY, CHARGER								
5	1	PAHZZ	5310-00-753-5375	46384	BS-440-2	FASTENER, BLIND .....	EA	2
5	2	XBHZZ		80063	SM-D-688802-2	COVER .....	EA	1
5	3	XBHZZ		80063	SM-C-688758	EXTRUSION, 3 FT .....	EA	1
5	4	XBHZZ		80063	SM-C-688757	EXTRUSION, 3 FT .....	EA	1
5	5	XBHZZ		80063	SM-D-688802-1	CASE .....	EA	1
5	6	XBHZZ		80063	SM-D-688819	HOUSING, BATTERY .....	EA	1
5	7	XBHZZ		80063	SM-C-688819	HOUSING .....	EA	1
5	8	PAHZZ	5310-00-826-0145	15653	MF6001-08	NUT, SELF-LOCKING, PL .....	EA	8
5	9	PAHZZ	5320-00-117-6815	96906	MS20470AD3-4	RIVET, SOLID .....	EA	16
5	10	PAHZZ	5340-00-178-7870	96906	MS18015-2	LATCH .....	EA	2
5	11	PAHZZ	5320-00-754-0822	96906	MS20470AD4-5	RIVET, SOLID .....	EA	4
5	12	PAHZZ	5320-00-117-6828	96906	MS20470AD4-6	RIVET, SOLID .....	EA	14
5	13	PAHZZ	5340-00-237-6254	96906	MS18015-3	STRIKE, CATCH .....	EA	2
5	14	XBHZZ		98021	790-PPV-2, 5-3, 5	VALVE, RELIEF .....	EA	1
5	15	XBHZZ		80063	SM-C-688746	HANDLE, CASE .....	EA	1
5	15	XBHZZ		98003	984-AL-2-RG	HANDLE, CASE .....	EA	1
5	16	PAHZZ	5310-00-764-2396	96906	MS21075-06	NUT, SELF-LOCKING PL .....	EA	10
5	17	PAHZZ	5320-00-111-6939	96906	MS20426AD3-5	RIVET, SOLID .....	EA	20
5	18	PAHZZ		96906	MS20257-5-200	HINGE .....	EA	2
5	19	XBHZZ		80063	SM-C-688759	SEAL, CASE COVER .....	EA	1
5	20	XBHZZ		80063	SM-C-688760	CLIP, SPRING .....	EA	2
5	21	PAHZZ	5320-00-117-6815	96906	MS20470AD3-4	RIVET, SOLID .....	EA	4
5	22	XBHZZ		80063	SM-B-688776	BRACKET, ADAPTER .....	EA	1
5	23	XBHZZ		86928	4521-62-80-1C	CLIP .....	EA	1
5	24	XBHZZ		80063	SM-C-688761	PARTITION, CABLE .....	EA	2
5	25	XBHZZ		80063	SM-C-688761-2	ANGLE .....	EA	1
5	26	XBHZZ		80063	SM-C-688761-1	PARTITION .....	EA	1

**SECTION IV.**

**NATIONAL STOCK NUMBER AND PART NUMBER INDEX**

**TM 11-6665-234-24P**

STOCK NUMBER	FIGURE NO,	ITEM NO,	STOCK NUMBER	FIGURE NO,	ITEM NO,
5310-00-043-4708	4	17	5940-00-682-2477	3	23
5950-00-051-1129	3	9	5310-00-722-5998	2	31
5305-00-054-5637	4	12	5340-00-753-3456	1	30
5305-00-054-5640	4	16	5310-00-753-5375	2	50
5305-00-054-5644	1	2	5310-00-753-5375	5	1
5305-00-054-5648	1	7	5320-00-754-0822	5	11
5305-00-054-5649	3	19	5935-00-754-8795	1	29
5305-00-054-5653	2	23	5935-00-755-2414	1	28
5305-00-054-6654	2	26	5305-00-763-6963	2	29
5305-00-054-6669	1	24	5310-00-764-2396	5	16
5305-00-054-6680	2	35	5305-00-768-0336	1	31
5940-00-113-3142	1	5	5310-00-810-7785	2	20
5910-00-113-5286	3	3	5310-00-826-0145	5	8
5320-00-117-6815	5	9	5315-00-847-3735	2	38
5320-00-117-6815	5	21	5935-00-879-6688	3	8
5320-00-117-6828	5	12	5310-00-880-5978	1	25
5320-00-117-6939	5	17	5310-00-880-5978	2	37
5340-00-178-7870	5	10	5970-00-895-7579	4	20
5365-00-215-7421	2	56	5310-00-905-5454	2	53
5340-00-237-6254	5	13	5961-00-924-6981	3	4
5935-00-238-6419	2	40	5310-00-928-2690	4	18
5330-00-248-3840	2	57	5310-00-929-6395	2	30
5330-00-248-3848	2	41	5310-00-933-8118	1	9
5975-00-296-0534	2	39	5310-00-933-8118	2	6
5935-00-410-9250	2	25	5310-00-933-8118	3	21
5950-00-501-1705	3	10	5310-00-933-8119	2	36
5805-00-543-0012	2	5	5310-00-934-9748	1	10
5355-00-543-0789	2	11	5310-00-934-9748	3	22
5355-00-582-3804	2	4	5310-00-934-9761	2	27
5310-00-595-6211	1	8	5310-30-938-2013	4	19
5310-00-595-6211	2	7	6240-00-965-1381	2	2
5310-00-595-6211	3	20	5935-00-990-5582	2	16
5310-00-616-2973	2	58	5930-01-051-1686	3	17
5310-00-616-3648	2	22	5935-01-064-9144	2	14
5330-00-618-0799	4	15	5910-01-073-9874	3	1

FSCM	PART NUMBER	FIGURE NO,	ITEM NO,	FSCM	PART NUMBER	FIGURE NO,	ITEM NO,
24169	AB263147	1	14	96906	MS24018-7	1	28
88044	AN3066-6	2	39	96906	MS24055-2	3	8
88044	AN936A716S	2	53	96906	MS24056-2	1	29
88044	AN960C6166	2	45	96906	MS25043-12D	2	40
80058	BB-506( )/U	1	16	96906	MS25082-21	2	58
46384	BS-05-632-20	2	52	96906	MS25281-R2	1	30
46384	BS-440-2	2	50	96906	MS28775-018	4	15
46384	BS-440-2	5	1	96906	MS29513-014	2	57
46184	BSOS-832-14	2	51	96906	MS29513-018	2	41
59730	B14-4	1	5	96906	MS3181-8N	2	16
71468	CA110821-6	1	22	96906	MS35337-79	2	30
81349	CKR06BX224KM	3	3	96906	MS35337-80	2	36
71744	CM7-3149	4	10	96906	MS35338-134	4	18
46384	FHS-6-32-6	2	49	96906	MS35338-135	1	9
81349	FM04277	3	6	96906	MS35338-135	2	6
81349	FM04277-002	3	5	96906	MS35338-135	3	21
81349	FM04277-250	3	7	96906	MS35649-224	4	19
81349	FT-04-9-B-03	3	28	96906	MS35649-244	1	10
81349	JAN1N4245	3	4	96906	MS35649-244	3	22
81349	JAN2N222	3	11	96906	MS35649-264	2	27
91929	JX1000I	4	20	96906	MS51957-11	1	2
27014	LM117HVK	3	18	96906	MS51957-14	1	7
15653	MF6001-08	5	8	96906	MS51957-15	3	19
96906	MS15795-803	1	8	96906	MS51957-19	2	23
96906	MS15795-803	2	1	96906	MS51957-3	4	12
96906	MS15795-803	3	20	96906	MS51957-30	2	26
96906	MS15795-805	2	31	96906	MS51957-44	1	24
96906	MS15795-807	1	25	96906	MS51957-53	2	35
96906	MS15795-807	2	37	96906	MS51957-6	4	16
96906	MS16562-190	2	38	96906	MS51959-17	1	31
96906	MS16625-4081	4	8	96906	MS51959-28	2	29
96906	MS18015-2	5	10	96906	MS75101-7	3	10
96906	MS18015-3	5	13	96906	MS77068-1	3	23
96906	MS20257-5-200	5	18	96906	MS91189-17	3	9
96906	MS20426AD3-5	5	17	96906	MS91528-1N2B	2	11
96906	MS20470AD3-4	5	9	96906	MS91528-2P2B	2	4
96906	MS20470AD3-4	5	21	81349	M24308/2-3	2	25
96906	MS20470AD4-5	5	11	81349	M39006/09-8333	3	1
96906	MS20470AD4-6	5	12	80205	NAS620-4L	2	22
96906	MS21075-06	5	16	80205	NAS671-4	2	20

## SECTION IV.

## NATIONAL STOCK NUMBER AND PART NUMBER INDEX

TM 11-6665-234-24P

FSCM	PART NUMBER	FIGURE		ITEM		FSCM	PART NUMBER	FIGURE		ITEM	
		NO,	NO,	NO,	NO,			NO,	NO,		
46384	PLC-632	3	25	80063	SM-C-688881	4	13				
77820	PT07E-8-3P	2	15	80063	SM-C-688892	4	6				
81349	RCR07GF120JM	3	15	80063	SM-C-688895	4	23				
81349	RCR07GF241JM	3	12	80063	SM-C-688896-1	4	25				
81349	RCR20GF360JM	3	16	80063	SM-C-688896-2	4	24				
81349	RNR55E2611FM	3	13	80063	SM-C-688900	1	13				
81349	RWR81S1ROOFM	3	14	80063	SM-C-688908	1	18				
07203	SF9815	1	33	80063	SM-C-688910	1	3				
80063	SM-B-688776	5	22	80063	SM-C-588913	1	34				
80063	SM-B-688795	2	32	80063	SM-D-688767	1	6				
80063	SM-B-688796	2	33	80063	SM-D-688774	2	43				
80063	SM-B-688799	2	21	80063	SM-D-588802	1	11				
80063	SM-B-688818	4	7	80063	SM-D-688802-1	5	5				
80063	SM-B-688821	4	2	80063	SM-D-688802-2	5	2				
80063	SM-B-688822-1	4	4	80063	SM-D-688804	1	12				
80063	SM-B-688823	4	5	80063	SM-D-688806	2	46				
80063	SM-B-688824	4	14	80063	SM-D-688806-1	2	48				
80063	SM-B-688850	2	47	80063	SM-D-688807	2	9				
80063	SM-B-688893	4	9	80063	SM-D-688808	2	10				
80063	SM-B-688901	2	18	80063	SM-D-688810	2	19				
80063	SM-B-688903	2	28	80063	SM-D-688811	2	34				
80063	SM-B-688906	1	21	80063	SM-D-688814	4	21				
80063	SM-B-688907	1	20	80063	SM-D-688819	5	6				
80063	SM-C-688746	5	15	80063	SM-D-688829	2	42				
80063	SM-C-688757	5	4	80063	SM-D-688882	3	24				
80063	SM-C-688758	5	3	80063	SM-D-68d882-L	3	26				
80063	SM-C-688759	5	19	80063	SM-D-688894	4	22				
80063	SM-C-688760	5	20	80058	TA-312/PT	2	5				
80063	SM-C-688761	5	24	81349	TYPE P,CLASS 2	1	4				
80063	SM-C-688761-1	5	26	91418	WL, 01M	3	2				
80063	SM-C-688761-2	5	25	98291	027-60002	3	27				
80063	SM-C-688768-1	1	35	72619	177-8430-0931-503	2	1				
80063	SM-C-688768-2	1	15	72619	177-8430-0932-503	2	3				
80063	SM-C-688768-3	1	27	72619	177-8430-0933-503	2	17				
80063	SM-C-688768-4	1	26	76854	184	2	2				
80063	SM-C-688768-5	1	19	13499	310-0470-080	4	17				
80063	SM-C-688770	1	1	91929	311SX4-T	4	1				
80063	SM-C-688781	1	17	14604	3500-7	1	32				
80063	SM-C-688797	2	24	80173	44-MY-231524	2	44				
80063	SM-C-688798	1	23	86928	4521-62-80-1C	5	23				
80063	SM-C-688809	2	8	74545	5965-VY	2	14				
80063	SM-C-688817	4	3	30327	60-FL-1/4	2	56				
80063	SM-C-689819	5	7	09353	7301SYZQE	3	17				
80063	SM-C-688825	4	11	98021	790-PPV-2, 5-3, 5	5	14				
80063	SM-C-688833	2	54	30817	97-360G	4	11				
80063	SM-C-688834	2	55	01121	97662	2	12				
80063	SM-C-688849	2	13	98003	984-AL-2-RG	5	15				

23/(24 BLANK)

By Order of the Secretary of the Army:

Official:

JOHN A. WICKHAM JR.  
*General, United States Army*  
*Chief of Staff*

ROBERT M. JOYCE  
*Major General, United States Army*  
*The Adjutant General*

Distribution:

To be distributed in accordance with special list.

\*U.S. GOVERNMENT PRINTING OFFICE: 1987-754-030/65060



RECOMMENDED CHANGES TO EQUIPMENT TECHNICAL PUBLICATIONS



THEN... JOT DOWN THE DOPE ABOUT IT ON THIS FORM, CAREFULLY TEAR IT OUT, FOLD IT AND DROP IT IN THE MAIL!

**SOMETHING WRONG WITH THIS PUBLICATION?**

FROM: (PRINT YOUR UNIT'S COMPLETE ADDRESS)

DATE SENT

PUBLICATION NUMBER

PUBLICATION DATE

PUBLICATION TITLE

BE EXACT... PIN-POINT WHERE IT IS

PAGE NO.	PARA-GRAPH	FIGURE NO.	TABLE NO.

IN THIS SPACE TELL WHAT IS WRONG AND WHAT SHOULD BE DONE ABOUT IT:

TEAR ALONG PERFORATED LINE

PRINTED NAME, GRADE OR TITLE, AND TELEPHONE NUMBER

SIGN HERE:

DA FORM 2028-2  
1 JUL 79

PREVIOUS EDITIONS ARE OBSOLETE.

P.S.—IF YOUR OUTFIT WANTS TO KNOW ABOUT YOUR RECOMMENDATION MAKE A CARBON COPY OF THIS AND GIVE IT TO YOUR HEADQUARTERS.

**PIN: 053548-000**